

**Liberty Garden®  
Products**

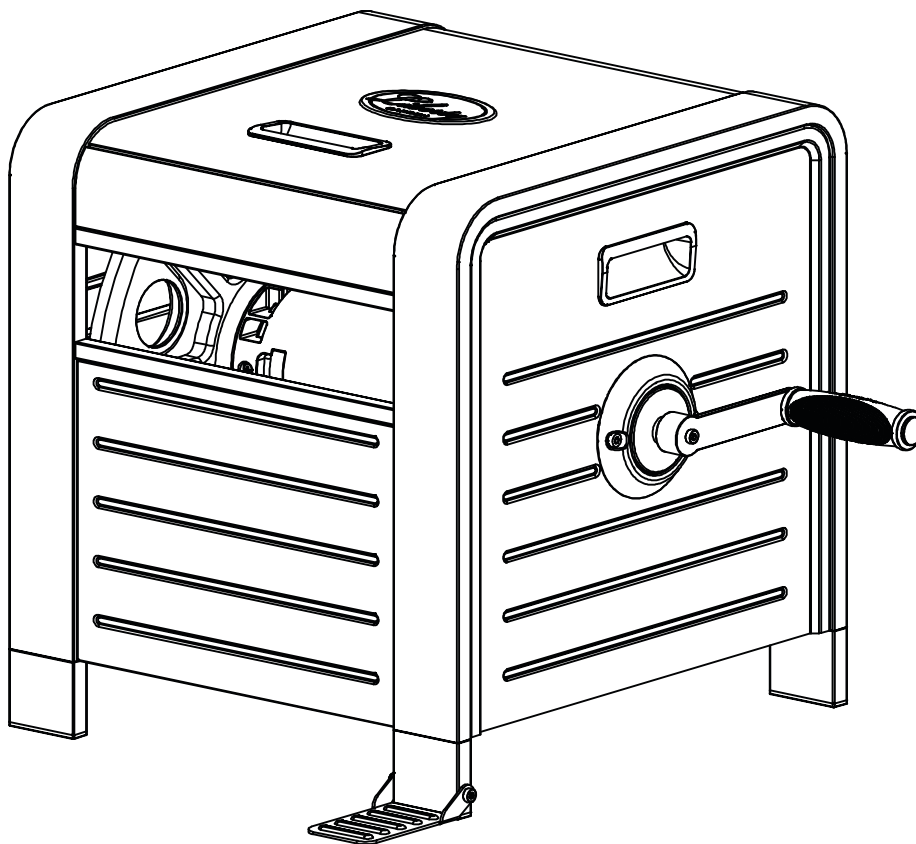
"Liberty Garden" is a  
registered trademark of  
Liberty Garden Products, Inc.



**Model #778**  
Color- Bronze and Matte Black

ATTACH YOUR RECEIPT HERE

# **Model 778 Decorative Hose Reel Box Owner's Manual**



VISIT OUR WEBSITE: [WWW.LIBERTYGARDENPRODUCTS.COM](http://WWW.LIBERTYGARDENPRODUCTS.COM)

OR CALL US TOLL FREE AT 1-866-820-5805

LIBERTY GARDEN PRODUCTS, INC.

1161 SOUTH PARK DRIVE, KERNERSVILLE NC 27284

**IMPORTANT: READ THE OWNER'S MANUAL BEFORE ASSEMBLING**

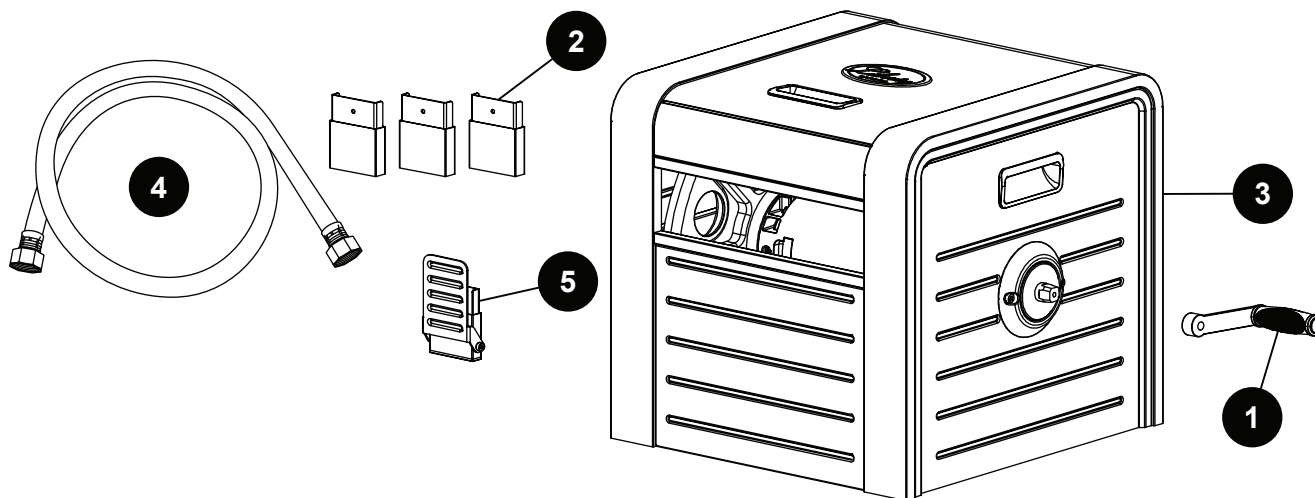
## PRODUCT SPECIFICATIONS

SPECIFICATIONS
200' of 5/8" Hose Capacity
Aluminum Water Connections
5' Foot Leader Hose
Strong Metal Housing
Rust Resistant Powder Coating
High Density Internal Spool
Soft Rubber Grip Handle
Step Down Foot

SPECIFICATIONS
Model #778 Color: Bronze and Matte Black
Ground Spikes
Mounting Hardware Not Included
Height: 19.0"
Width: 23.25"
Depth: 17.0"
Weight: 24.0 lbs
Made in China

## PACKAGE CONTENTS

Before beginning assembly of product, make sure all parts are present. Compare parts with package contents list and hardware contents list. If any part is missing or damaged, do not attempt to assemble the product.

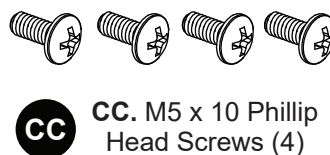
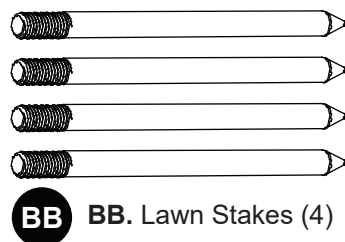


PART	DESCRIPTION	QUANTITY
1	Crank Handle	1
2	Slide in Feet	3
3	Hose Reel Box	1

PART	DESCRIPTION	QUANTITY
4	Leader Hose	1
5	Step Down Foot	1

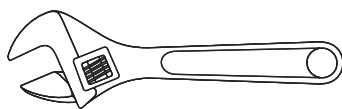
## HARDWARE CONTENTS (Drawings are not to scale)

The hardware displayed below is included with the product.

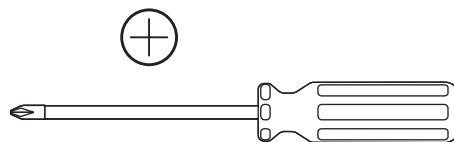


## TOOLS REQUIRED FOR ASSEMBLY (Not Included)

**Estimated Assembly Time: 10 minutes** (not including connecting the leader hose).



Adjustable Wrench



Phillips Screwdriver or  
Bit for an Electric Drill

## SAFETY INFORMATION



### SAFETY INFORMATION

Please read and understand this entire manual before attempting to assemble, operate or install the product.

- **READ ALL INSTRUCTIONS CAREFULLY AND BE SURE THEY ARE FULLY UNDERSTOOD BEFORE USING THE HOSE REEL.**

- **DO NOT** load more than 200' (61.0 m) of hose onto the hose reel.
- Distribute the hose evenly over the surface of the drum assembly.
- **DO NOT** exceed maximum water pressure of 125 PSI.
- **DO NOT** expose the unit to freezing temperatures while water remains in the plumbing system. Freezing temperatures can crack the brass swivel causing damage to the hose reel, hose, and even your pipes. Drain water from the hose reel and store indoors during freezing temperatures.
- **DO NOT** leave water running through the hose reel while not in use or unsupervised.
- **DO NOT** consume water from garden hose, it is not rated for human consumption.
- Turn off water source when not in use. Do not leave hose pressurized when not in use.
- If any parts become damaged, broken, or misplaced, do not use the hose reel until the parts have been repaired or replaced.
- It is recommended that the hose reel be inspected for damage before each use.
- **KEEP THESE INSTRUCTIONS FOR FUTURE REFERENCE.**



### WARNING

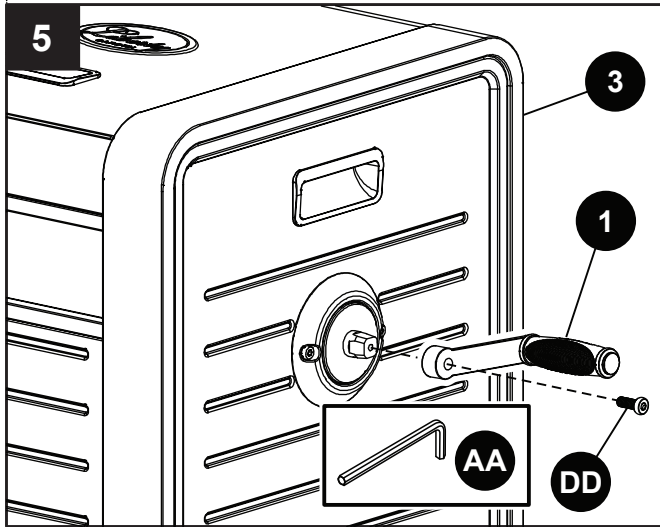
This product contains one or more chemicals known in the state of California to cause cancer and birth defects or reproductive harm. Wash hands after handling.

## ASSEMBLY INSTRUCTIONS

### STEP 1:

Attach the crank handle (1) to the hose reel box (3) using the M6 x 16 allen screw (DD) and tighten with supplied allen wrench (AA).

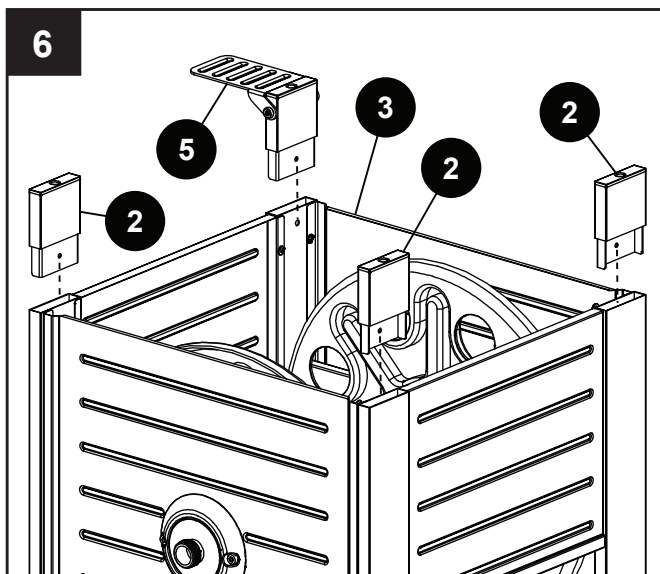
**NOTE:** Do Not overtighten crank handle Allen screw.



### STEP 2:

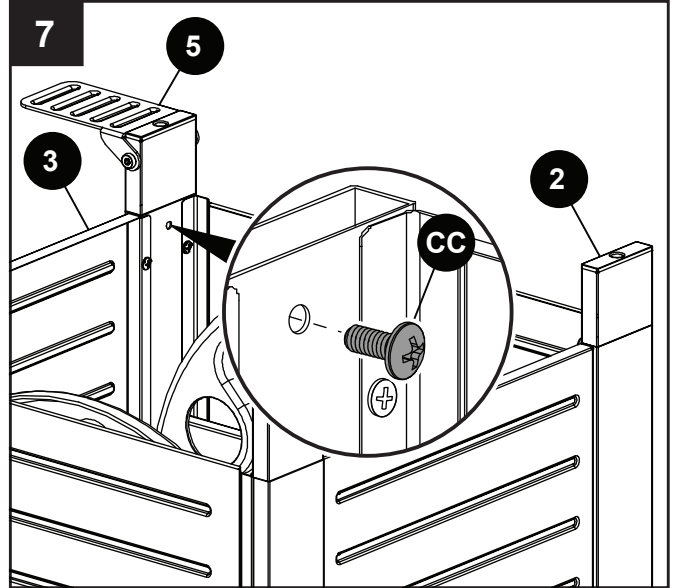
Flip the hose reel box (3) upside down. Line up the holes of the hose reel box and insert the slide in feet (2) and the step down foot (5) as shown in the figure below.

**NOTE:** Ensure the lid stays closed.



### STEP 3:

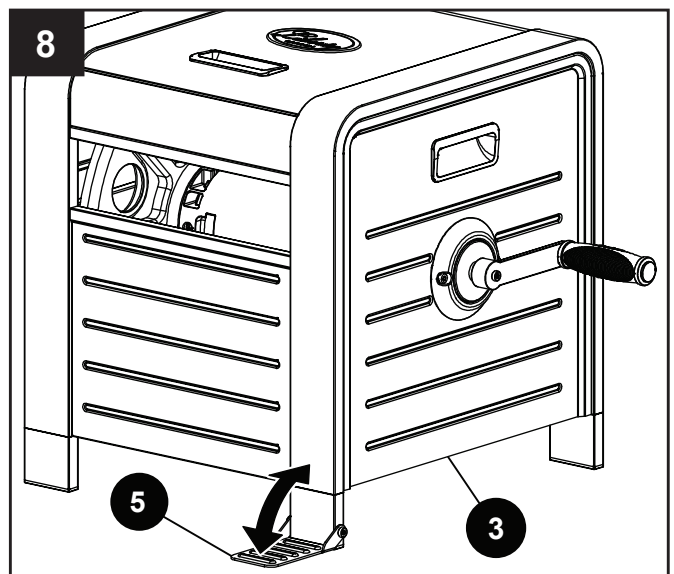
Using the four Phillips head screws (CC) and a Phillips head screwdriver, secure the three slide in feet (2) and one step down foot (5) to hose reel box (3).



### STEP 4:

Tilt the hose reel box (3) upright. To secure the hose reel on a hard surface when winding the garden hose, push the step down foot (5) downward and step on it to prevent movement of the product.

**WARNING:** Possible pinching hazard. Please open and close slowly.

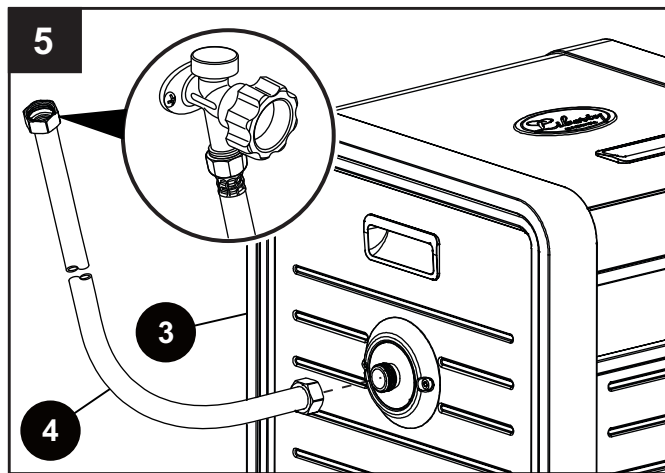


## ASSEMBLY INSTRUCTIONS (continued)

### STEP 5:

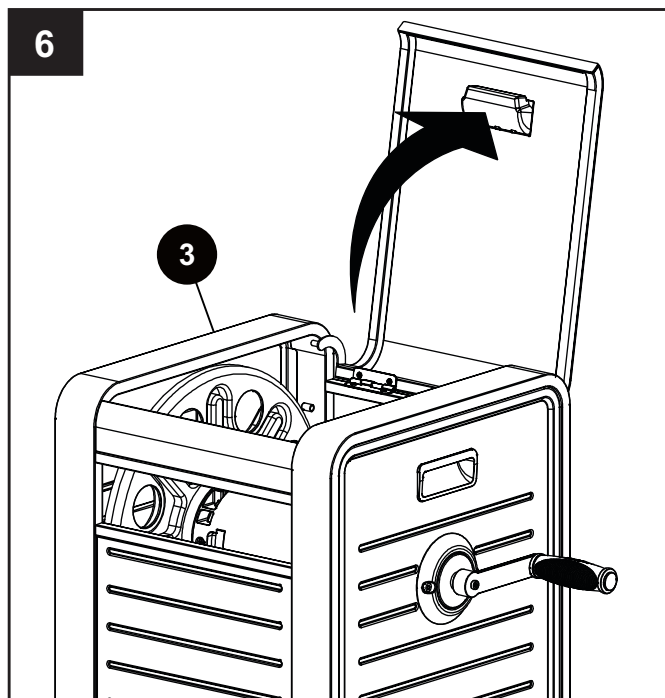
Attach leader hose (4) to the water connector on the hose reel box (3). Then, attach the other end of leader hose to water source as shown in the Figure below.

**NOTE:** Do Not overtighten connections. This could cause stripping of the water connector threads.



### STEP 6:

For access to the inside spool and water connector, flip the lid of the hose reel box (3) up using the handle.



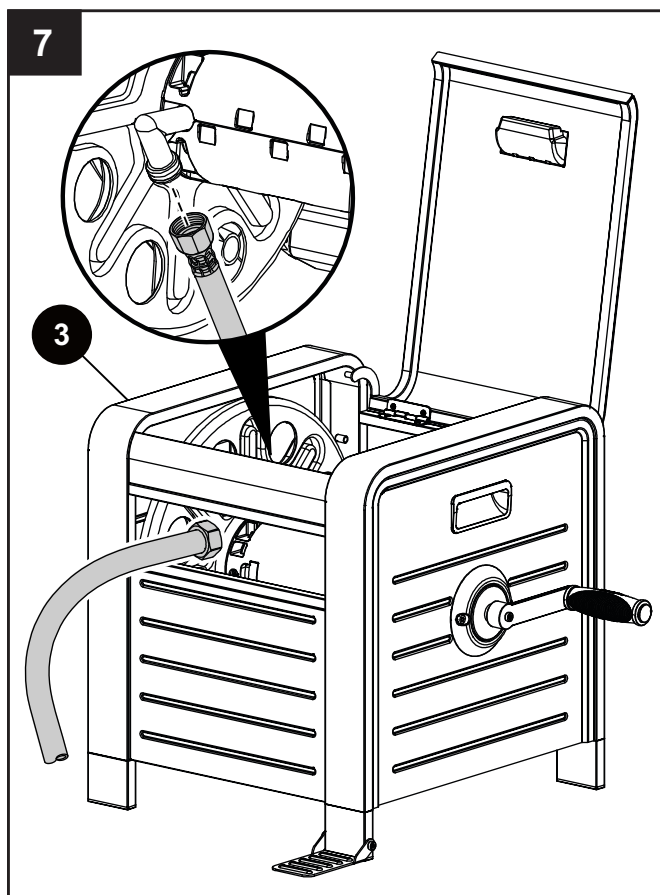
### STEP 7:

Slide garden hose into the front opening of the hose reel box (3), then tighten hose fitting on the hose reel aluminum connector. The hose is now ready to wind around the spool.

**NOTE:** The hose reel box holds up to 200 ft. of 5/8" garden hose.

**NOTE:** An adjustable wrench may be needed. Do Not overtighten connections. This could cause stripping of hose reel aluminum connector threads.

**NOTE:** Check for leaks prior to using the hose reel box.



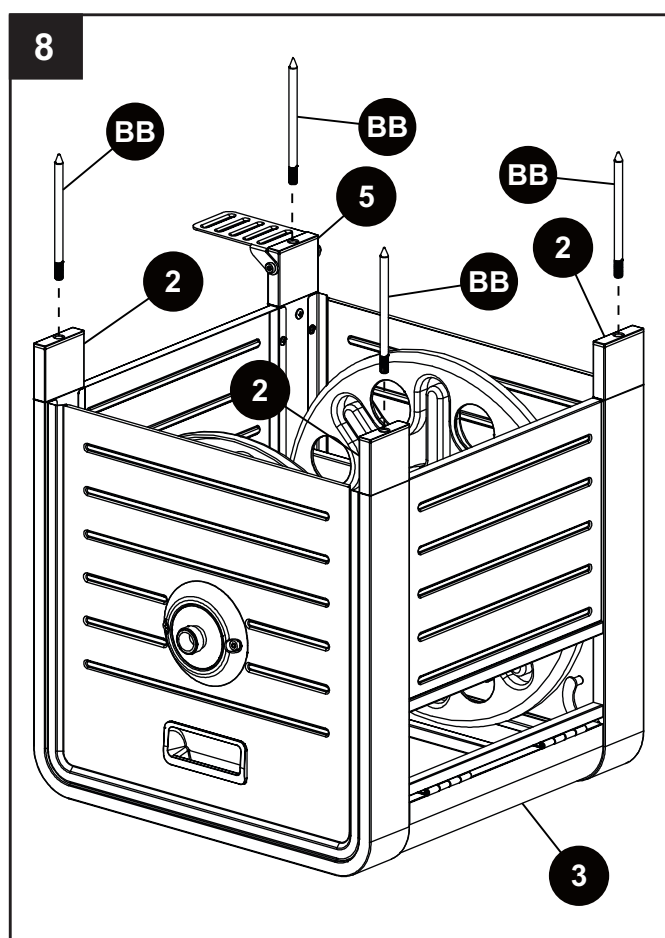
## ASSEMBLY INSTRUCTIONS (continued)

### STEP 8:

**NOTE:** For a more secure fit into soft ground or your yard use the four lawn stakes (**BB**) to secure the hose reel box (**3**).

Flip the hose reel box (**3**) upside down. Using your fingers, twist and tighten the lawn stakes (**BB**) into the slide in feet (**2**) and step down foot (**5**).

**CAUTION:** Product has sharp points. Improper contact may result in injury. Handle with care.

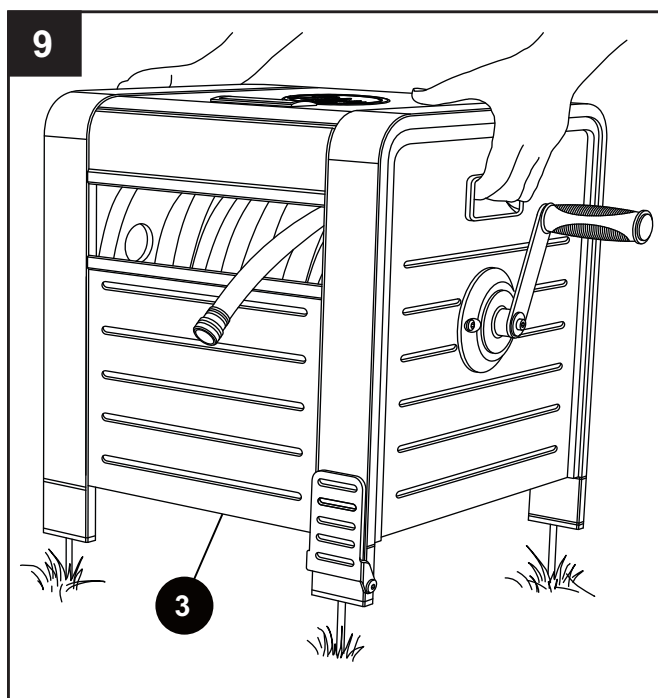


### STEP 9:

With the four lawn stakes (**BB**) installed, push down on the entire hose reel box (**3**) with both hands to sink the stakes securely in the ground or in mulch.

**CAUTION:** Do Not sit or stand on the hose reel box. Always move the hose reel box (**3**) using the side handles as shown in the figure below.

**NOTE:** Before use, remove the clear plastic film from the top of the lid on the hose reel box (**3**).



## CARE AND MAINTENANCE

### Rust

Your hose reel will give you many years of reliable and functional hose storage. However, with any steel product there is a chance for rust to develop over time. Minor surface damage may occur during shipping, assembly, or during installation. If any base metal is exposed to the elements for an extended period of time, rust will develop. Additionally, rust acceleration can be caused by exposing the hose reel to yard fertilizers.

It is highly recommended that you periodically inspect your hose reel for minor scratches that can easily be repaired by using automotive touch-up paint.

Inspecting the hose reel after each season and protecting the finish will help prevent rust and prolong the life of the product.

### Leaks

Your hose reel is manufactured with the finest quality components available. All components are manufactured to rigorous quality standards not common in other consumer grade hose reels available today. When you install your hose reel, be sure the hose washers are in place and all fittings are secure. **DO NOT OVER TIGHTEN** as you might damage the components. If you live in more temperate climates, be sure to drain the unit of any residual water before storing. **DO NOT EXPOSE THE UNIT TO FREEZING TEMPERATURES** while water remains in the plumbing system.

- Ensure the hose washers are in place.
- Ensure all fittings are secure and tight.
- Check the hose connections for damage if the unit was exposed to freezing temperatures.
- The leader hose and garden hose uses rubber O-Rings which over time can wear out. Replacement O-Rings can be found at [www.libertygardenproducts.com](http://www.libertygardenproducts.com)
- Turn off water after each use.

## WINTERIZING AND STORAGE

Drain the hose reel prior to the onset of freezing temperatures. If any trapped water freezes, it may cause damage to the hose reel, hose, and even your pipes.

Store the entire unit - including hose reel and hose - inside your garage or storage shed at above-freezing temperatures. Storing your hose reel inside during the winter is an excellent way of protecting your garden hose, leader hose and O-Rings.

## TROUBLESHOOTING

**Problem:** Your new hose reel is leaking at the water supply tube on the hose reel box.

**Solution:** It is normal for the water supply tube to leak slightly until the O-Rings are wet and have seated. If the leaking continues, you do not need to take the hose reel back to the store. This is a simple problem and is easily fixed by following the troubleshooting procedures outlined on page 8.



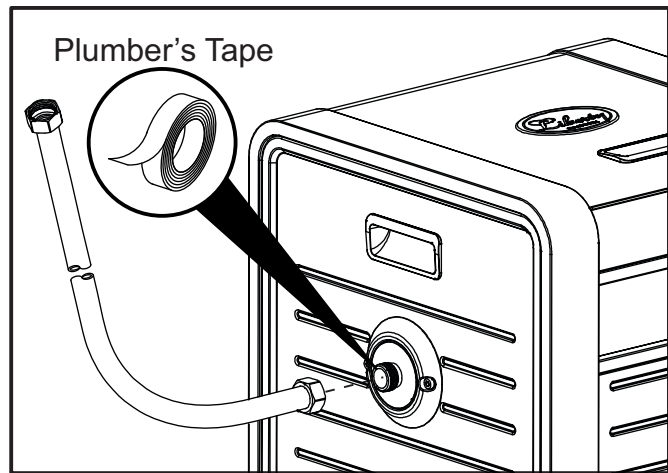
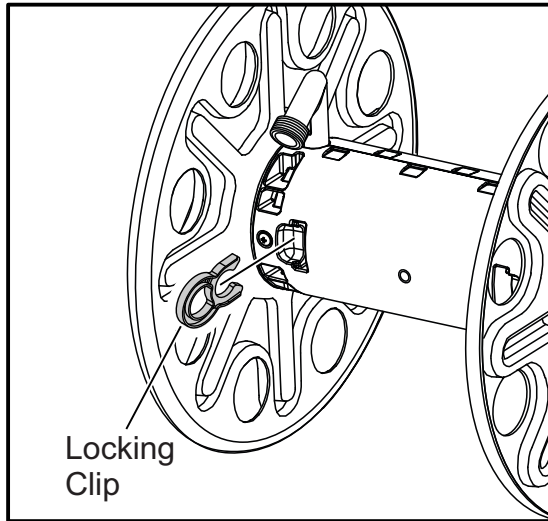
## TROUBLESHOOTING (continued)

**Problem:** The water supply tube is not rotating, causing the leader hose to kink.

**Solution:** Open the hose reel box lid, remove garden hose, ensure the locking clip is fully seated. If not, remove the locking clip, re-insert the locking clip and push until an audible click is heard. See Figure 1.

**Problem:** Leaking Fixture (water supply tube)

**Solution:** Apply Teflon/Plumber's Tape to the threads on the water supply tube to ensure the fixture are tight.



## LIBERTY GARDEN PRODUCTS LIMITED WARRANTY

Effective November 22, 2023

This limited warranty is applicable to each original end-customer (hereinafter "Customer") purchasing the model 778 Decorative Hose Reel Box consisting of the structural metal box and plastic spool (hereinafter the "Structural Frame") and various other non-frame components (hereinafter the "Non-Frame Parts") sold by Liberty Garden Products, Inc. (hereinafter "Company") for Customer's own use and not for resale. The Structural Frame and Non-Frame Parts are collectively referred to herein as the "Products".

### 1. LIMITED WARRANTY; EXCLUSIVE REMEDIES:

**1.1. LIMITED WARRANTY ON PRODUCTS:** Company warrants solely to the original Customer that (a) the Structural Frame will be free from defects in materials and workmanship under normal use for a period of three (3) YEAR(S) from the date of original retail purchase, and (b) the Non-Frame Parts (which consist of the crank handle, swivel and water connections, leader hose and tires), will be free from defects in materials and workmanship under normal use for a period of ONE (1) YEARS from the date of original retail purchase. Notwithstanding the foregoing, the colors and finishes of the Products may vary within a reasonable scope due to unavoidable color variations in different production batches, and such variations shall not constitute a material defect. This limited warranty is limited solely to the original Customer with proof of purchase and is not transferable.



## **LIBERTY GARDEN PRODUCTS LIMITED WARRANTY (continued)**

**1.2. THE WARRANTY:** During a covered Product's limited warranty period, Company will, at Company's sole option and discretion, (1) repair the defective component or product without charge or (2) replace the defective component or product without charge.

**1.3.** The foregoing limited warranty is subject to the Customer's proper storage, transportation, handling and use of the Products as the same are defined within Company's then-current published guides and instructions for use and care. The limited warranty does not include defects due to normal wear and tear, abuse or misuse, mishandling, neglect, accident, fire, lightning, sunlight or other natural hazard, delivery or transportation damage, failure to follow applicable directions or instructions, or improper or inadequate cleaning, maintenance, care, repairs, modifications, or use beyond a Product's intended use. Please note that since the Structural Frame is made from steel rust may occur over time. As such, this limited warranty does not include rust or defects due to the same.

**1.4. LIMITED WARRANTY CLAIMS PROCEDURE:** To obtain performance under this limited warranty, Customer shall notify Company in writing (to Liberty Garden Products, Inc., 1161 South Park Drive, Kernersville, NC 27284, Attn: Customer Service / Warranty Department), by email (to [customerservice@libertygardenproducts.com](mailto:customerservice@libertygardenproducts.com)), or by telephone (to (336) 992-3595) with a full description of the defect that is covered by warranty and a copy of the dated proof of purchase of the applicable product.

- Company shall review each such claim and issue Customer a return merchandise authorization ("RMA") in the event that the described defect or condition merits warranty review as determined by Company. Customers who have been issued a RMA shall, at Company's election, return the covered item to the same physical address listed above for reporting initial claims. Company shall not accept any returned product without a RMA.
- Upon receipt, Company will evaluate the returned product(s) to determine if there is a warranty claim and, if so, how Company wishes to remedy the same. During a covered product's respective limited warranty period, Company will, at Company's sole and absolute option and discretion, (1) repair the defective component or product without charge or (2) replace the defective component or product without charge. Refunds are not available pursuant to this limited warranty.
- Customer is solely responsible for transportation of the covered product(s) to the Company for evaluation (if applicable and requested by Company). In the event that Company determines that a claim under this limited warranty is justified, Company shall be responsible for transportation of the repaired, corrected, replaced or exchanged product back to Customer. Customer shall be solely responsible for the transportation of any product back to Customer if Company determines that a claim under this warranty is not justified.
- Any repaired, corrected, replaced or exchanged Products shall be subject to the Limited Warranty set forth to the duration of the original limited warranty period as set forth in Section 1.1. and not for any extended duration, following their repair, correction, replacement or exchange.

**1.5. IF A COMPANY PRODUCT DOES NOT CONFORM TO THESE LIMITED WARRANTIES, THE PURCHASER'S SOLE AND EXCLUSIVE REMEDY IS, AT COMPANY'S SOLE AND EXCLUSIVE OPTION, THE (1) REPAIR OF ANY DEFECTIVE PRODUCT OR COMPONENT PART OR (2) REPLACEMENT OF ANY DEFECTIVE PRODUCT OR COMPONENT PART. THE LIMITED WARRANTY AND REMEDIES SET FORTH ABOVE ARE EXCLUSIVE AND MADE IN LIEU OF ALL OTHER WARRANTIES, REMEDIES, RIGHTS OR CONDITIONS, WHETHER ORAL OR WRITTEN, EXPRESS OR IMPLIED, EITHER IN FACT OR BY OPERATION OF LAW, STATUTORY OR OTHERWISE, INCLUDING THE IMPLIED WARRANTIES OF MERCHANTABILITY AND FITNESS FOR A PARTICULAR PURPOSE. COMPANY SPECIFICALLY DISCLAIMS, WITHOUT LIMITATION, ANY AND ALL OTHER WARRANTIES, EXPRESS OR IMPLIED, OF ANY KIND. IF COMPANY CANNOT LAWFULLY DISCLAIM IMPLIED WARRANTIES UNDER THIS LIMITED**

**WARRANTY, ALL SUCH WARRANTIES, INCLUDING THE IMPLIED WARRANTIES OF MERCHANTABILITY AND FITNESS FOR A PARTICULAR PURPOSE, ARE LIMITED IN DURATION TO THE DURATION OF THIS LIMITED WARRANTY. The Company does not assume or authorize any person to assume for them any other liability in connection with the Products.**

**2. EXCLUSION AND LIMITATION OF LIABILITY:**

**IN NO EVENT, WHETHER BASED ON CONTRACT OR TORT OR OTHER LEGAL THEORY, SHALL COMPANY BE LIABLE FOR ANY INDIRECT, INCIDENTAL, PUNITIVE, SPECIAL OR CONSEQUENTIAL DAMAGES, INCLUDING BUT NOT LIMITED TO, DAMAGES TO OTHER PROPERTY, INCONVENIENCE, DAMAGES FOR LOSS OF PROFITS, REVENUE, GOODWILL OR USE, INCURRED BY CUSTOMER OR ANY THIRD PARTY, WHETHER IN AN ACTION IN CONTRACT, TORT, STRICT LIABILITY, OR IMPOSED BY STATUTE, OR OTHERWISE, EVEN IF ADVISED OF THE POSSIBILITY OF SUCH DAMAGES.**

Some states do not allow the exclusion or limitation of incidental or consequential damages or exclusions or limitations on the duration of implied warranties or conditions, so the above limitations or exclusions may not apply to Customer. In jurisdictions that limit the scope of or preclude limitations or exclusion of remedies or damages, or of liability, such as liability for gross negligence or willful misconduct or do not allow implied warranties to be excluded, the limitation or exclusion of warranties, remedies, damages or liability set forth above are intended to apply to the maximum extent permitted by applicable law. This limited warranty gives the Customer specific legal rights, and the Customer may also have other rights that vary by state, country or other jurisdiction.

**3. SEVERABILITY:**

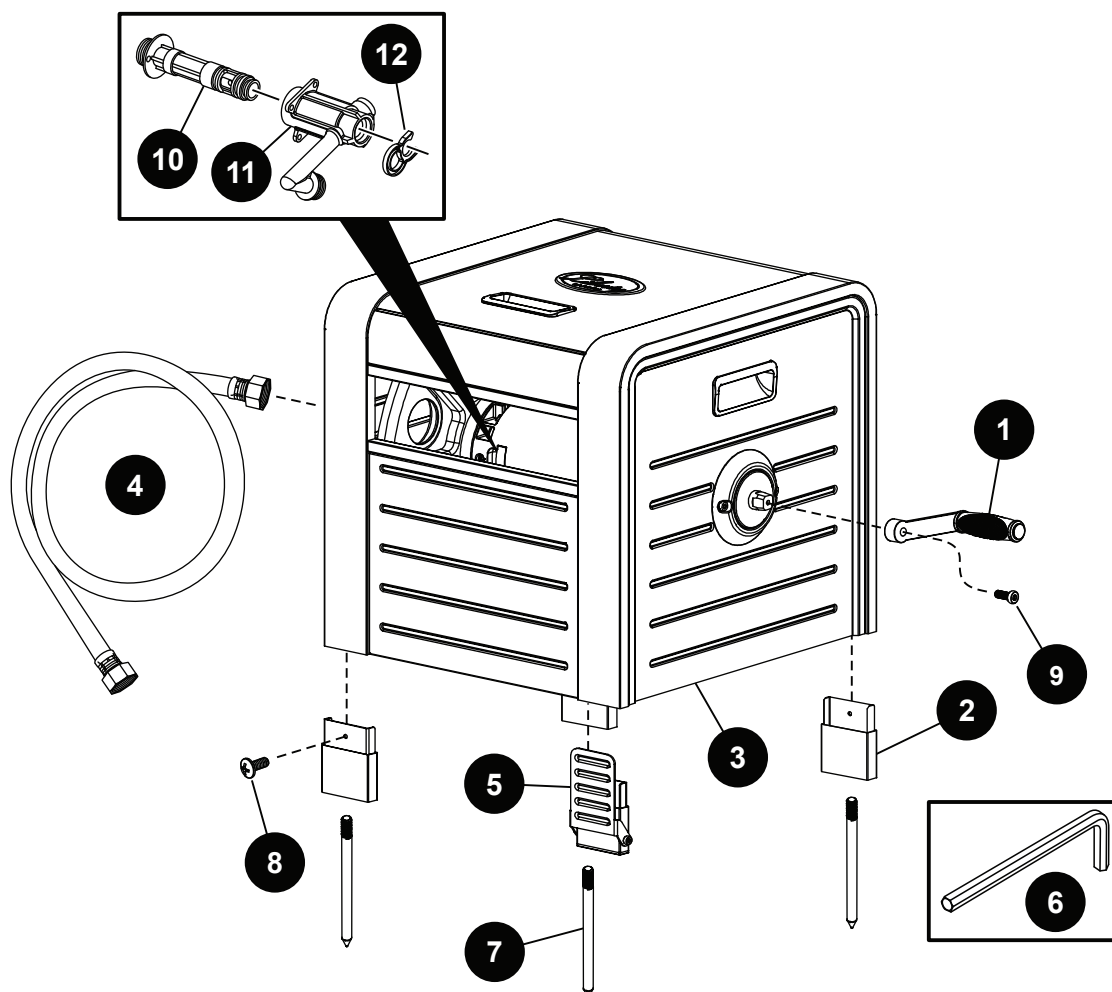
If any provision of this limited warranty is held to be illegal, invalid or otherwise unenforceable, such provision will be enforced to the extent possible consistent with its stated intention, or, if incapable of such enforcement, will be deemed to be severed and deleted from this limited warranty, while the remainder of the terms of this limited warranty will continue in full force and effect.

**4. DISPUTE RESOLUTION:**

This Liberty Garden Products, Inc. Limited Warranty shall be governed by and construed in accordance with the laws of the State of North Carolina, without regard to its principles of conflicts of law. The parties acknowledge the exclusive jurisdiction of the federal and state courts of the State of North Carolina. Any claims or disputes under this Liberty Garden Products, Inc. Limited Warranty shall be heard exclusively in any state or federal courts sitting in Guilford County, North Carolina, and both parties expressly consent to the personal jurisdiction and venue of the North Carolina state and federal courts for such actions.

## REPLACEMENT PARTS LIST

For replacement parts, call our customer service department toll free at 1-866-820-5805, 9 a.m. - 5 p.m., EST, Monday - Friday. You may also contact us at [customerservice@libertygardenproducts.com](mailto:customerservice@libertygardenproducts.com)



PART	DESCRIPTION	PART #
1	Crank Handle	778-1
2	Slide in Feet	778-2
3	Hose Reel Box	778-3
4	Leader Hose	778-4
5	Step Down Foot	778-5
6	Allen Wrench	778-6

PART	DESCRIPTION	PART #
7	Lawn Stakes	778-7
8	M5 x 10 Phillips Head Screws	778-8
9	M6 x 16 mm Allen Screw	778-9
10	Supply Tube	778-10
11	Exit Tube	778-11
12	Locking Clip	778-12



**Liberty Garden Products**

© 2023 Liberty Garden Products, Inc. All Rights Reserved, Kernersville, NC

Updated 11/21/2023