



LIBERTY ROYAL GARDEN™

Model 805 200' Decorative Hose Reel Owner's Manual



VISIT OUR WEBSITE: WWW.LIBERTYGARDENPRODUCTS.COM
OR CALL US TOLL FREE AT 1-866-820-5805

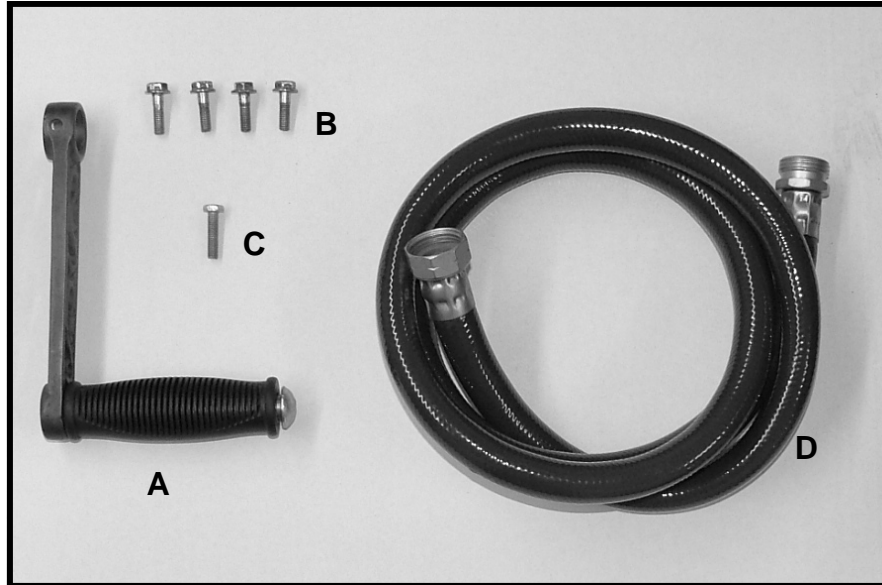
LIBERTY GARDEN PRODUCTS, INC.
500 INDENEER DRIVE, SUITE 9, KERNERSVILLE NC 27284

IMPORTANT: READ THE OWNER'S MANUAL BEFORE ASSEMBLING

Estimated assembly time: 15 minutes.

TOOLS NEEDED: ADJUSTABLE WRENCH

PARTS LIST



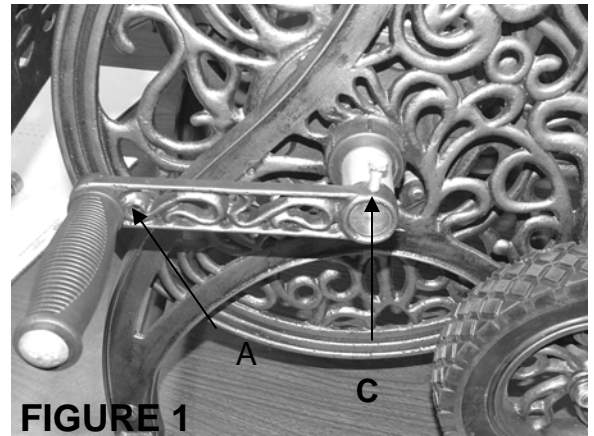
- A. CRANK HANDLE
- B. U-HANDLE BOLTS (4)
- C. CRANK HANDLE BOLT (1)
- D. LEADER HOSE (1)

IMPORTANT:

LAYOUT ALL PARTS AND FASTENERS. MAKE SURE ALL PARTS ARE ACCOUNTED FOR. IF ANY PART IS MISSING PLEASE CONTACT LIBERTY GARDEN PRODUCTS AT **1-866-820-5805**. **DO NOT CONTACT THE RETAILER**. YOU CAN ALSO VISIT OUR WEBSITE, WWW.LIBERTYGARDENPRODUCTS.COM, FOR MORE INSTRUCTIONS, PICTURES AND HELPFUL HINTS.

CART ASSEMBLY:

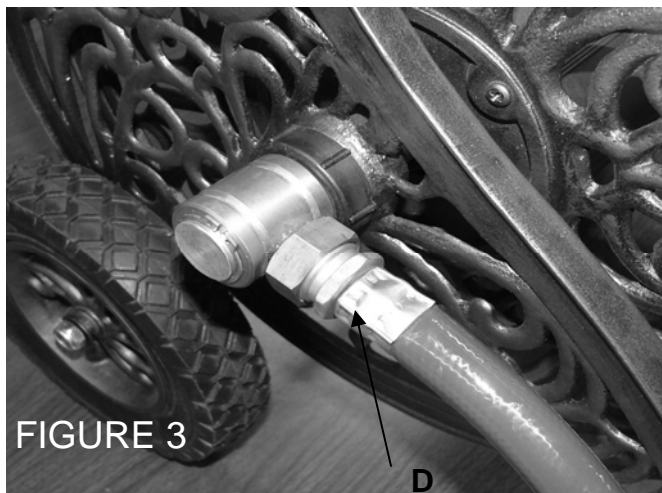
1. Align the holes in the crank handle (A) with crank handle shaft. Tighten using the crank handle bolt (C).
See Figure 1.



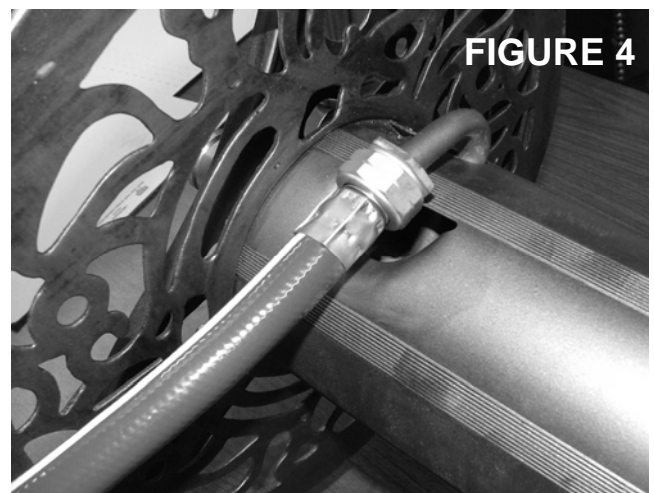
2. Align the U-handle with the holes in the frame. Take the U-handle bolts (B) and tighten them securely.
See Figure 2.

*The U-handle can fold down for easy storage, simply take the top bolt out on each side.

3. Attach the leader hose (D) to the brass swivel connector.
See Figure 3.



4. Attach your garden hose to the hose connection on the spool.
See Figure 4.



Model 805 Two Wheel Decorative Hose Cart

The model 805 is the first all Cast Aluminum, two wheel hose reel cart for your lawn and garden needs. This attractive cart holds up to 200 feet of 5/8" garden hose that is easily pulled out, then retracted when done. It comes fully assembled with a flip-up, cushion handle. Being aluminum, this cart will never rust and for added protection against the weather it has been finished with a durable, powder coat for years of hard use. This special cart is lightweight for easy maneuverability and comes with hard rubber tires that will never go flat. The flip-up front provides easy access to the hose yet hides the hose when not in use. The model 805 also features an 8" x 15" shelf to hold your garden tools.



Features:

- Perfect for home garden landscaping needs.
- Holds 200 ft. of 5/8" garden hose.
- All cast aluminum.
- Durable powder coat finish.
- Brass swivel connector.
- 5' Leader hose included.
- Solid rubber tires.
- 8" x 15" shelf for tools.
- Attractive Patina finish.
- Cushioned handle
- Lightweight; 25 lbs. for easy maneuvering.
- 20" wide x 18" deep x 37.25" tall at handle

New Items for 2009!

Model 705

Decorative Wall Mounted Hose Reel that will hold up to 125 ft. of 5/8" garden hose. Features a flip-up cover to hide the hose when not in use. It is made of all non-rust, cast aluminum with brass plumbing fixtures and a durable powder coat finish. Comes fully assembled.



Model 505

This attractive hose pot will look great on your lawn or patio to conceal your hoses but will still keep them neat within easy reach for use. Each pot is made of special Magnesia casting then finished with an attractive, durable finish. Three different designs and colors are available for all tastes and decors. Hold up to 200 ft of 5/8" garden hose.



Model 660: Manger Design

This attractive, decorative hose butler is easily installed on to almost any structure to keep your hose neat and out of the way until you need them. It holds up to 100 ft. of 5/8" garden hose. It is made of all cast aluminum so it wont rust. Color: Antique Bronze.



Curing a Leaking Swivel

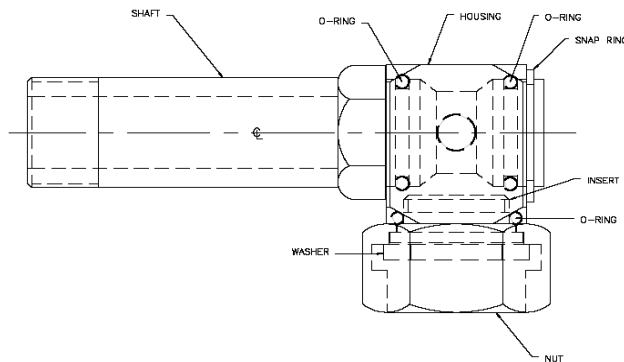
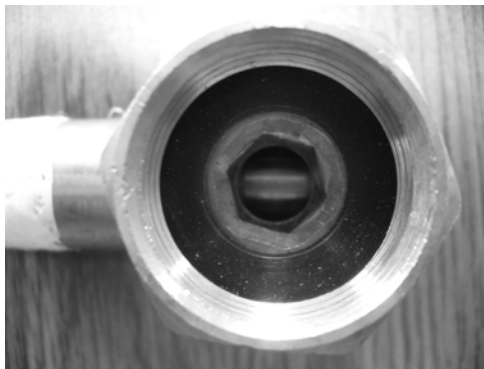
Problem:

Your new Liberty® hose reel or hose reel cart is leaking at the swivel.

Solution:

It is normal for the swivel to leak slightly until the O-rings are wet and have seated. If the leaking continues, you don't need to take the cart back to the store. This is a simple problem and is easily fixed by a simple procedure.

1. If the leader hose is attached to the swivel, unscrew the hose and look inside the swivel.
2. Using either a hex key or a large screw driver, insert the tool into the hex opening and gently tighten the threaded insert. **DO NOT OVER TIGHTEN!**
3. This should stop the leaking.
4. If the unit still leaks, please check that the hose washer is inside the nut. You may contact Liberty for a new hose washer or obtain one at any hardware store.
5. If your swivel is old, the O-Rings may be worn. Please contact us for a new set of O-Rings.
6. If these steps do not solve your leaking problem, then contact Liberty Garden.



**CALL US AT 1-866-820-5805 IF YOU HAVE ANY QUESTIONS
REGARDING TROUBLESHOOTING AND WARRANTY**

Care Instructions

Rust

Your Liberty™ hose reel will give you many seasons of reliable and functional hose storage. Your Liberty™ hose reel is made from cast aluminum that will not rust. The fasteners on the model 805 are made of steel however, so we recommend applying a clear acrylic paint overtop of them to prevent rusting.

In the case of wall-mounted reels, be sure to use stainless steel mounting hardware. Also, remember to use the correct size and quantity of hardware to properly support the total weight of the unit. A standard 100' length of garden hose weighs approximately 15 pounds. Filled with water, the additional weight can exceed 20 pounds. The mounting hardware must be able to support the combined weight of the unit itself, hose, plus water.

We recommend that you periodically inspect your reel for any surface damage. Scratches can easily be repaired by using standard automotive touch-up body paint. Some of our most loyal customers recommend that at the end of each season, the unit be cleaned and painted with a clear acrylic paint.

Two other sources of rust acceleration are exposing the reel to yard fertilizers or leaving your hose reel standing in grass. Be sure to rinse off your hose reel after it comes in contact with freshly fertilized grass. Also, try to park your hose reel on solid ground. Leaving it standing on top of vegetation promotes condensation on the undercarriage of the unit.

Leaks

Your Liberty™ hose reel is manufactured with the finest quality components available. All components are manufactured to rigorous quality standards not common in other consumer grade hose reels available today. When you install your Liberty™ hose reel, be sure the hose washers are in place and all fittings are secure. **DO NOT OVER TIGHTEN** as you might damage the components. If you live in more temperate climates, be sure to drain the unit of any residual water before storing. **DO NOT EXPOSE THE UNIT TO FREEZING TEMPERATURES** while water remains in the plumbing system.

Troubleshooting Guide

Problem: Swivel head is not rotating, causing the leader hose to kink up.

Solution: Remove leader hose and turn the square head of the swivel several times; apply lubricant.

Problem: Leaking Fixtures (galvanized tee; brass coupling; swivel)

Solution: Apply Teflon/Plumber's Tape or/and make sure fixtures are tightened.

TIPS

- To help delay rust, check for any scratches on your screws and fasteners. Apply clear acrylic/ weatherproof paint to avoid rusting.
- Drain water before storing.
- **DO NOT** drink water from the hose.

Warranty & Care

Our guarantee is as functional and straight-forward as our products. Since we design and build our products to provide you with many years of satisfaction, all Liberty™ products are guaranteed against defects in materials and workmanship.

In the unlikely event that a problem arises as a result of a defect in our materials or workmanship, we will promptly repair or replace the item at our expense. All we require is that you contact us first and we'll take it from there.

It is important to note that our guarantee is not an unconditional guarantee for the life of the product. Liberty™ hose stands and reels are made from the finest materials available under our exacting manufacturing standards. But, like any other product, it is not indestructible. Therefore, our guarantee does not cover:

- Product damage that is a result of abuse, misuse, or mishandling. (Exposing the unit to freezing temperatures with water remaining in the reel plumbing system voids the unit warranty.)
- **Rust.** Despite the industrial quality coating and our best efforts, steel will rust over time.
- Incidental damage or consequential damages or injury to persons or to other property not purchased from us due to the use of our product.
- Do **NOT** consume water from garden hose. It is not fit for human consumption.

If there is damage to the product that occurred as a result of shipping, you should file a damage claim with the carrier.

As with any product, it should be expected that component parts - particularly moving parts, seals, o-rings, wheels, hose, and connectors will wear with use and over time may need to be replaced or refurbished. This type of normal wear and tear is naturally not covered by our guarantee, but we will always be happy to provide you with prompt, high quality service and replacement parts at a nominal cost.

This warranty gives you specific legal rights, and you may also have other rights which vary from state to state. (Some states do not allow the exclusion or limitation of incidental or consequential damages, so the above limitation may not apply to you).

You will find that we apply the same standard of excellence to our customer service as we do to our products.

Warning! This product contains one or more chemicals known to the State of California to cause cancer and birth defects or other reproductive harm. Wash hands after handling.

